

Blue Mesa



1,834 Finished Square Feet **3,196 Total Square Feet**

See Standards Sheet for included features. See Options Sheets for upgrade options. See Price Sheet for standard pricing. See Lot Map for available lot options.

One of the standout features of this 3-Bedroom, 2.5 Bath floor plan is the oversized three-car garage, providing ample room for your boat, 4-wheelers, paddle boards, and more, all without sacrificing space for your vehicles. Inside is designed for gatherings and relaxation. The kitchen boasts a central island not to mention the spacious walk-in pantry.

ROOM DIMENSIONS

Kitchen/Dining: 17' x 13'

Mudroom: 11' x 11'

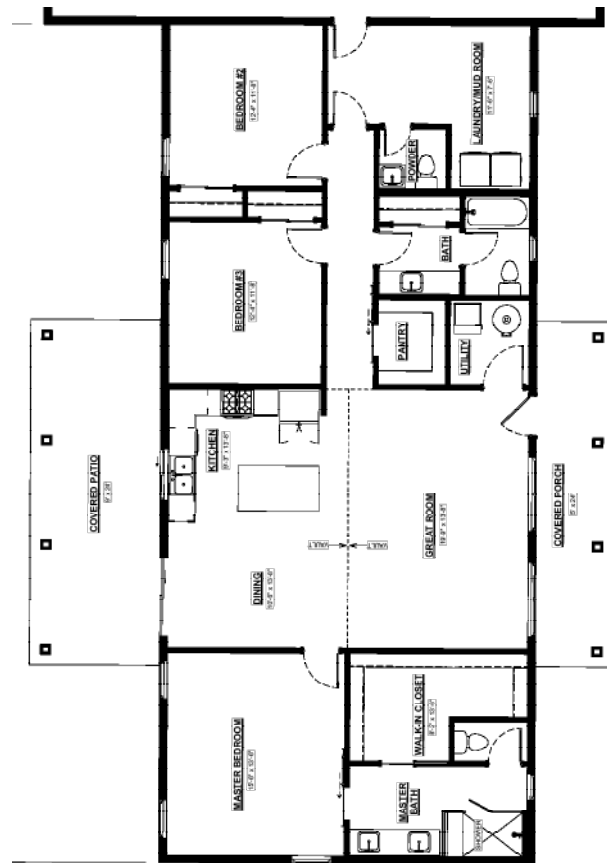
Great Room: 19' x 14'

Master Bedroom: 15' x 13'

Bedroom Two: 12' x 11'

Bedroom Three: 12' x 11'

Garage: 42' x 32'



Plans and elevations are artist's renderings and may contain options, which are not standard on all models. Dynamic Homes of Colorado reserves the right to make changes to these floor plans, specifications, dimensions and elevations without prior notice. Stated dimensions and square footages are approximate and should not be used as representation of the home's precise or actual size. Any statement, verbal or written, regarding "under air" or "finished area" or any other description or modifier of the square footage size of any home is a shorthand description of the manner in which the square footage was estimated and should not be construed to indicate certainty.