

Crestone Peak



2,002 Finished Square Feet **2,791 Total Square Feet**

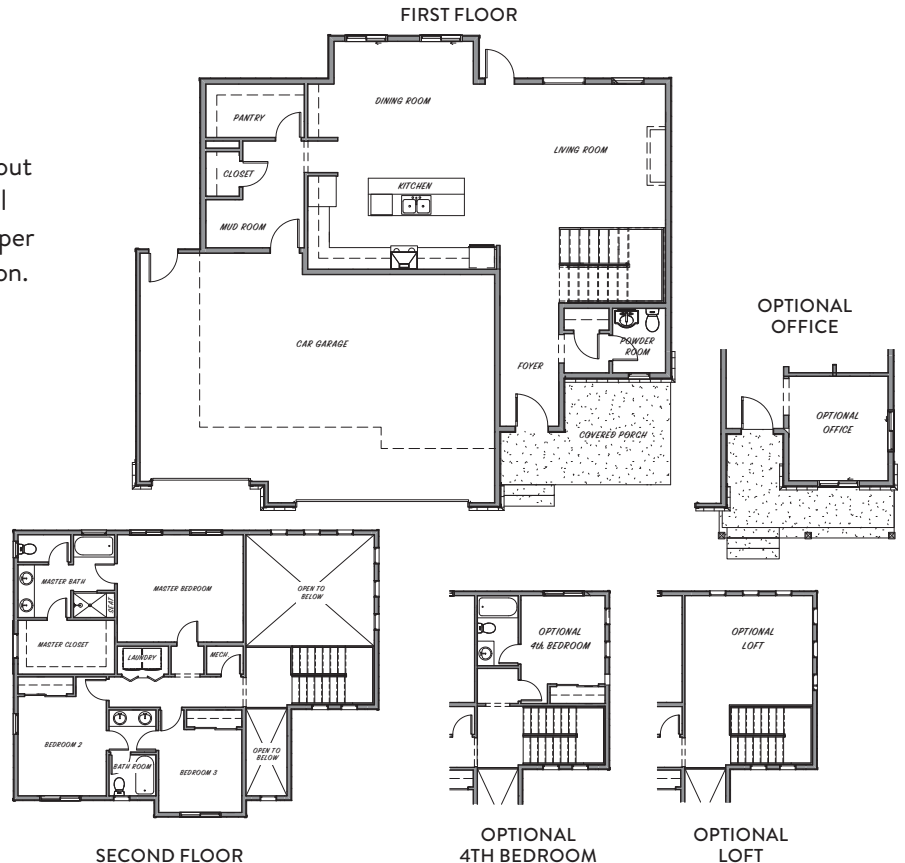
See Standards Sheet for included features. See Options Sheets for upgrade options. See Price Sheet for standard pricing. See Lot Map for available lot options.

CHARMING RANCH PLAN

Fantastic 2-story plan has main level that boasts an open-concept through kitchen, dining & great room. Bright kitchen has large island and ample counter space. Huge walk-in pantry. Versatile upper floor layout includes master suite w/spa like 5pc bath, 2 additional bedrooms sharing a jack and jill bath and desirable upper floor laundry. Many options available for customization. Main level office rounds out this great floor plan!

ROOM DIMENSIONS

- Kitchen: 18' x 11'
- Dining Room: 14' x 12'
- Great Room: 14' x 18'
- Master Bedroom: 16' x 13'
- Bedroom Two: 12' x 11'
- Bedroom Three: 11' x 11'
- Unfinished Basement: 789 sq. ft.



Plans and elevations are artist's renderings and may contain options, which are not standard on all models. Dynamic Homes of Colorado reserves the right to make changes to these floor plans, specifications, dimensions and elevations without prior notice. Stated dimensions and square footages are approximate and should not be used as representation of the home's precise or actual size. Any statement, verbal or written, regarding "under air" or "finished area" or any other description or modifier of the square footage size of any home is a shorthand description of the manner in which the square footage was estimated and should not be construed to indicate certainty.