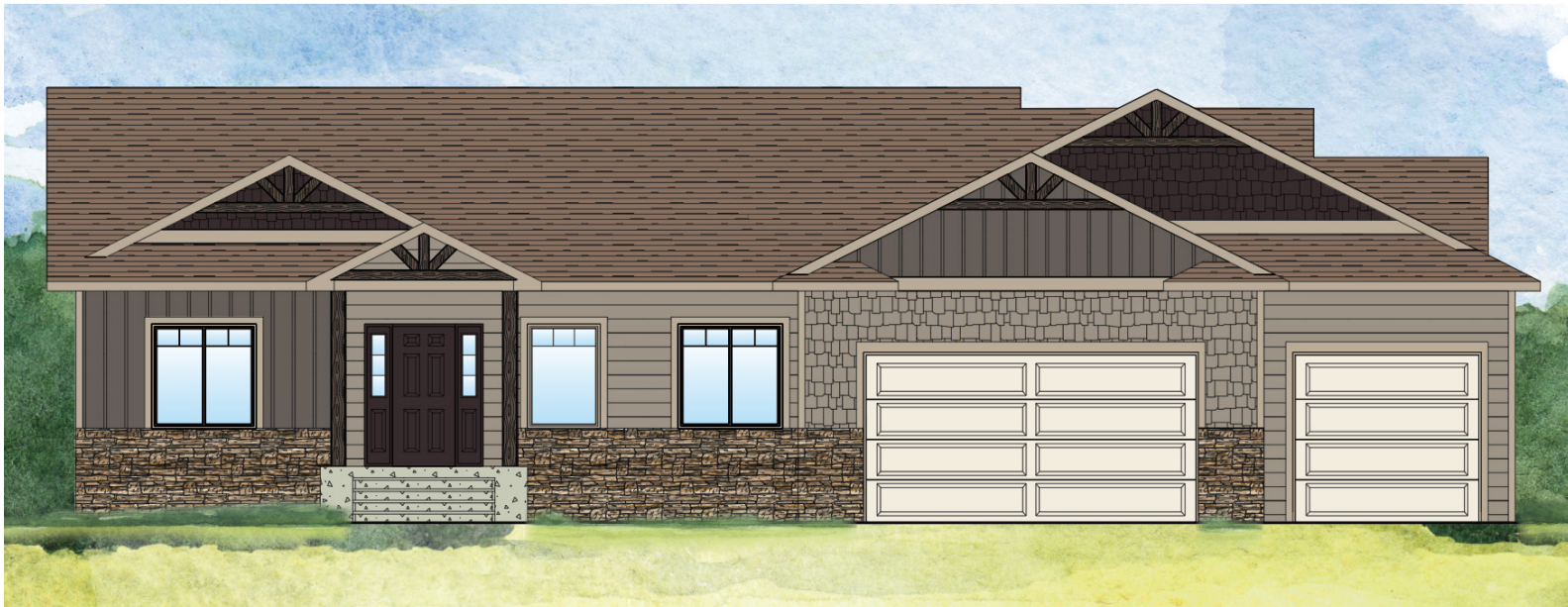


# Pikes Peak



**2,146 Finished Square Feet**      **4,285 Total Square Feet**

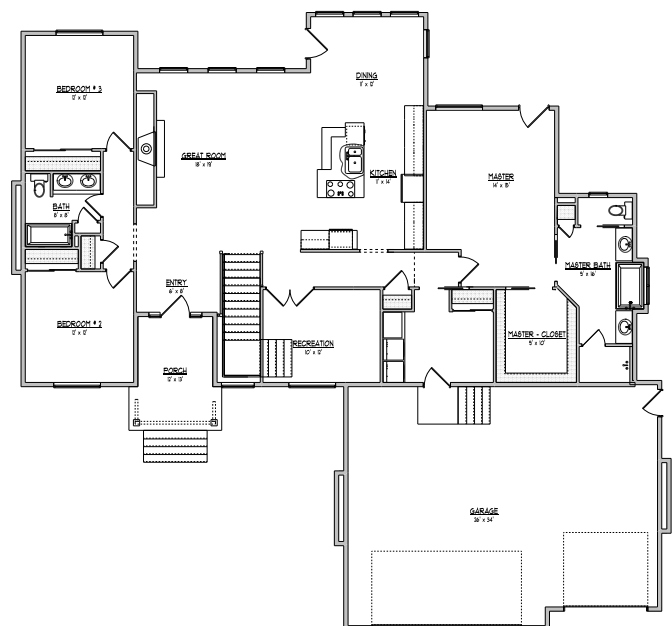
See Standards Sheet for included features. See Options Sheets for upgrade options. See Price Sheet for standard pricing. See Lot Map for available lot options.

## SPRAWLING RANCH STYLE HOME

The Pikes Peak is a sprawling ranch style home with 3 bed, 2 full bath, study, and full unfinished basement. Open concept through kitchen, dining & great rooms is planned perfectly for entertaining. Luxurious master retreat is complete with walk-in closet, spa-like 5 piece bath, and private access to back patio. Mudroom off garage. 3 car garage. 2 patios for optimal outdoor enjoyment!

### ROOM DIMENSIONS

Kitchen: 11' x 14'  
Dining Room: 11' x 12'  
Great Room: 18' x 19'  
Master Bedroom: 14' x 15'  
Bedroom Two: 12' x 12'  
Bedroom Three: 12' x 12'  
Unfinished Basement: 2,139 sq. ft.



Plans and elevations are artist's renderings and may contain options, which are not standard on all models. Dynamic Homes of Colorado reserves the right to make changes to these floor plans, specifications, dimensions and elevations without prior notice. Stated dimensions and square footages are approximate and should not be used as representation of the home's precise or actual size. Any statement, verbal or written, regarding "under air" or "finished area" or any other description or modifier of the square footage size of any home is a shorthand description of the manner in which the square footage was estimated and should not be construed to indicate certainty.