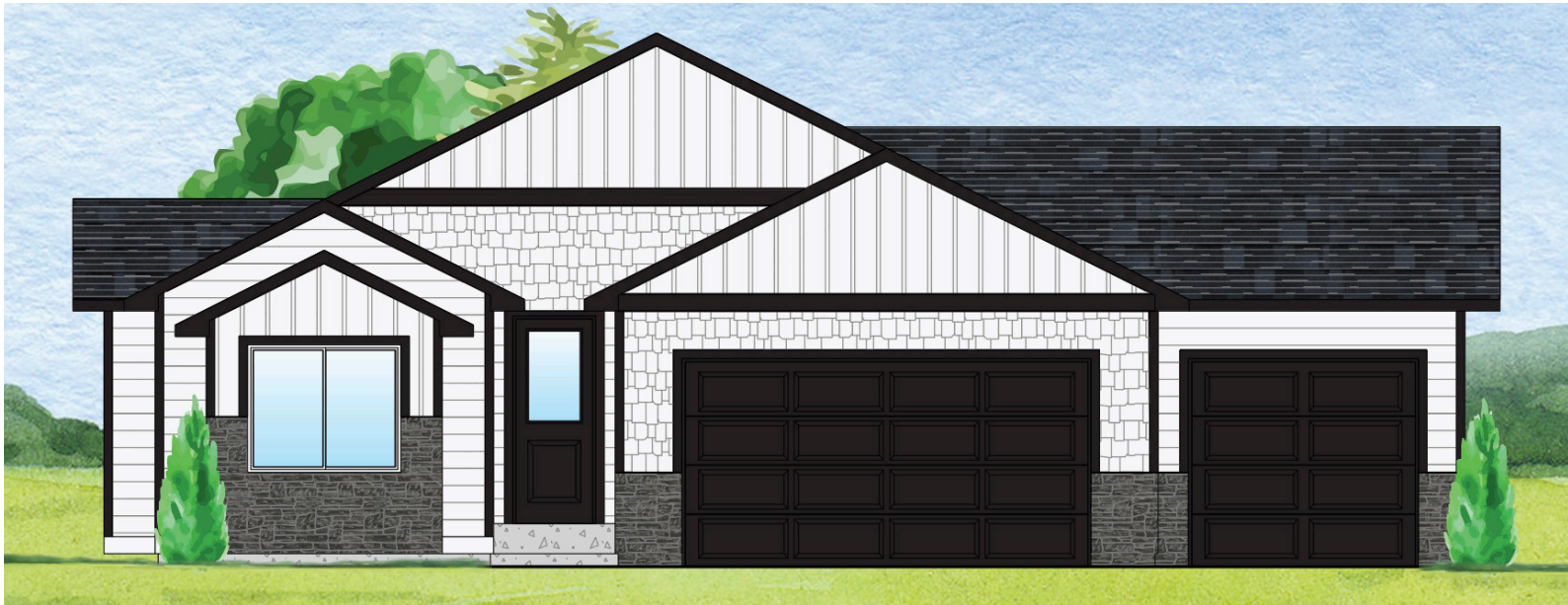


Mount Lincoln



1,757 Finished Square Feet **3,291 Total Square Feet**

See Standards Sheet for included features. See Options Sheets for upgrade options. See Price Sheet for standard pricing. See Lot Map for available lot options.

CHARMING RANCH PLAN

Spacious 3 bed, 2 bath ranch style home was designed with entertaining in mind with a bright, open layout through kitchen, dining & great rooms. Gourmet kitchen features spacious island & walk-in pantry. Large master suite is separate from secondary bedrooms and boasts large walk-in closet & walk-in spa shower. Generously sized secondary bedrooms. Practical mudroom off the garage.

ROOM DIMENSIONS

Kitchen: 12' x 14'

Dining Room: 11' x 11'

Great Room: 11' x 18'

Master Bedroom: 14' x 15'

Bedroom Two: 12' x 12'

Bedroom Three: 12' x 12'

Unfinished Basement: 1,534 sq. ft.



Plans and elevations are artist's renderings and may contain options, which are not standard on all models. Dynamic Homes of Colorado reserves the right to make changes to these floor plans, specifications, dimensions and elevations without prior notice. Stated dimensions and square footages are approximate and should not be used as representation of the home's precise or actual size. Any statement, verbal or written, regarding "under air" or "finished area" or any other description or modifier of the square footage size of any home is a shorthand description of the manner in which the square footage was estimated and should not be construed to indicate certainty.